

Cornell University

# Fall 2010 Enrollment Report\*

Catherine J Alvord and Marin E Clarkberg  
Institutional Research and Planning  
440 Day Hall • Ithaca, NY 14853-2801

## Contents

---

A. Total Undergraduate Enrollment .....	1
B. First-Time, Full-Time First Year Undergraduates .....	5
C. External Undergraduate Transfers .....	10
D. Total Graduate/Professional Enrollment .....	12
E. First-Time, Post-Baccalaureate Enrollment .....	16

---

\* Throughout this report the following abbreviations apply:

AG: Agriculture & Life Sciences  
AR: Architecture, Arts & Planning  
AS: Arts & Sciences  
EN: Engineering  
GM: Johnson Graduate School of Management [MBA degree program]  
GR: Graduate School  
HA: Hotel Administration  
HE: Human Ecology  
IL: Industrial & Labor Relations  
LA: Law School [JD and LLM degree programs]  
VM: Veterinary Medicine [DVM degree program]  
PR: Professional Schools combined [GM,LA,VM]

## A. Total Undergraduate Enrollment

### Observations

- At 13,935, Fall 2010 undergraduate enrollment was at an all-time high (see Figure A.1)
- Three colleges have decreased total enrollments over a recent interval, while others are at their highest enrollment (see Figure A.2):
  - Arts & Sciences (down 216 students since 2001)
  - Human Ecology (down 209 students since 2001)
  - Agriculture & Life Sciences (increased 53 students since 2009)
  - Engineering (increased 52 students since 2009)
- Under-represented minority (in this report, URMs are Black, Hawaiian/Pacific Islander, Hispanic, Native American) enrollment for Fall 2010 is 2,150, or 15% of undergraduate enrollment (see Figure A.3).
- Over the last two decades, Hispanic enrollment has increased more rapidly than Black enrollment (see Figure A.4). However, new federal ethnicity/race categories adopted in Fall 2010 have a dramatic impact on the Hispanic ethnic category. That is, any student that is a U.S. citizen or permanent resident indicating a Latino/Hispanic ethnicity are now included in the Hispanic ethnicity category regardless of race. This change increases the Hispanic counts and decrease the mixed URM count.
- While total undergraduate enrollment is 50% female, the percentage of women in the undergraduate student body varies substantially by college (see Figure A.5)

Figure A.1. Fall Undergraduate Enrollment, Fall 1980 – Fall 2010

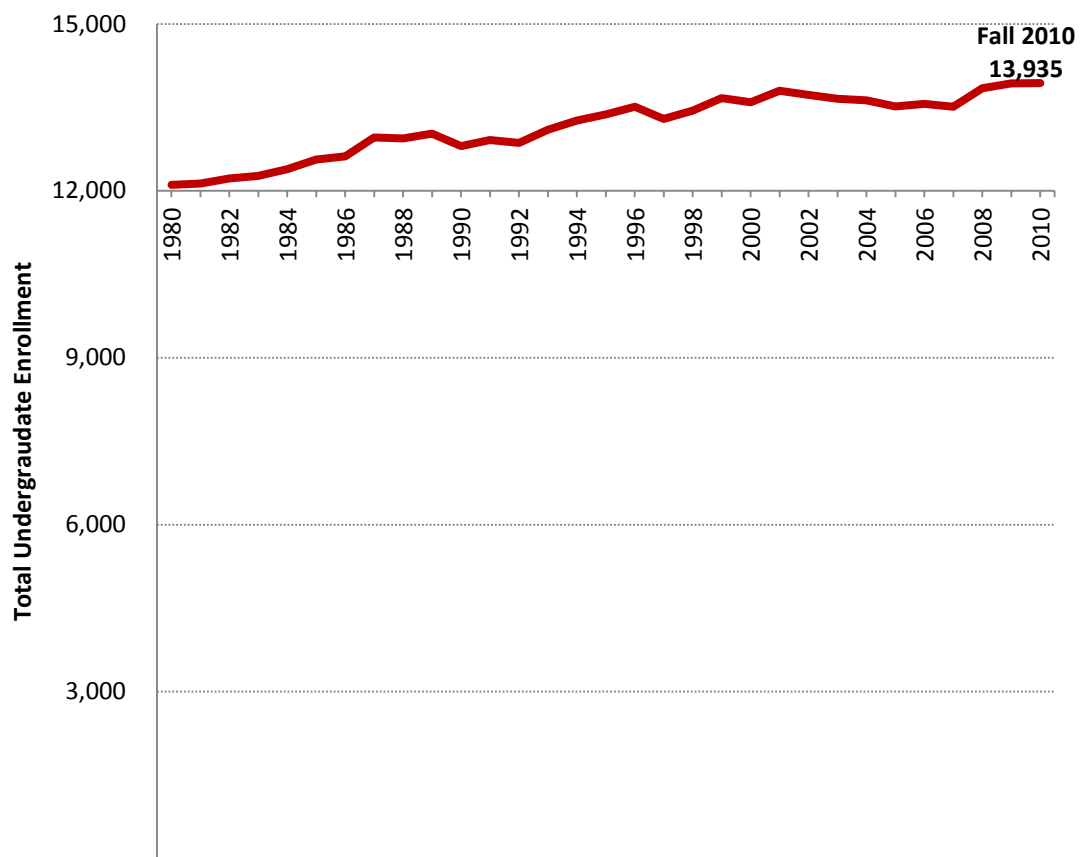


Figure A.2. Undergraduate Enrollment, Fall 1980–Fall 2010, by College

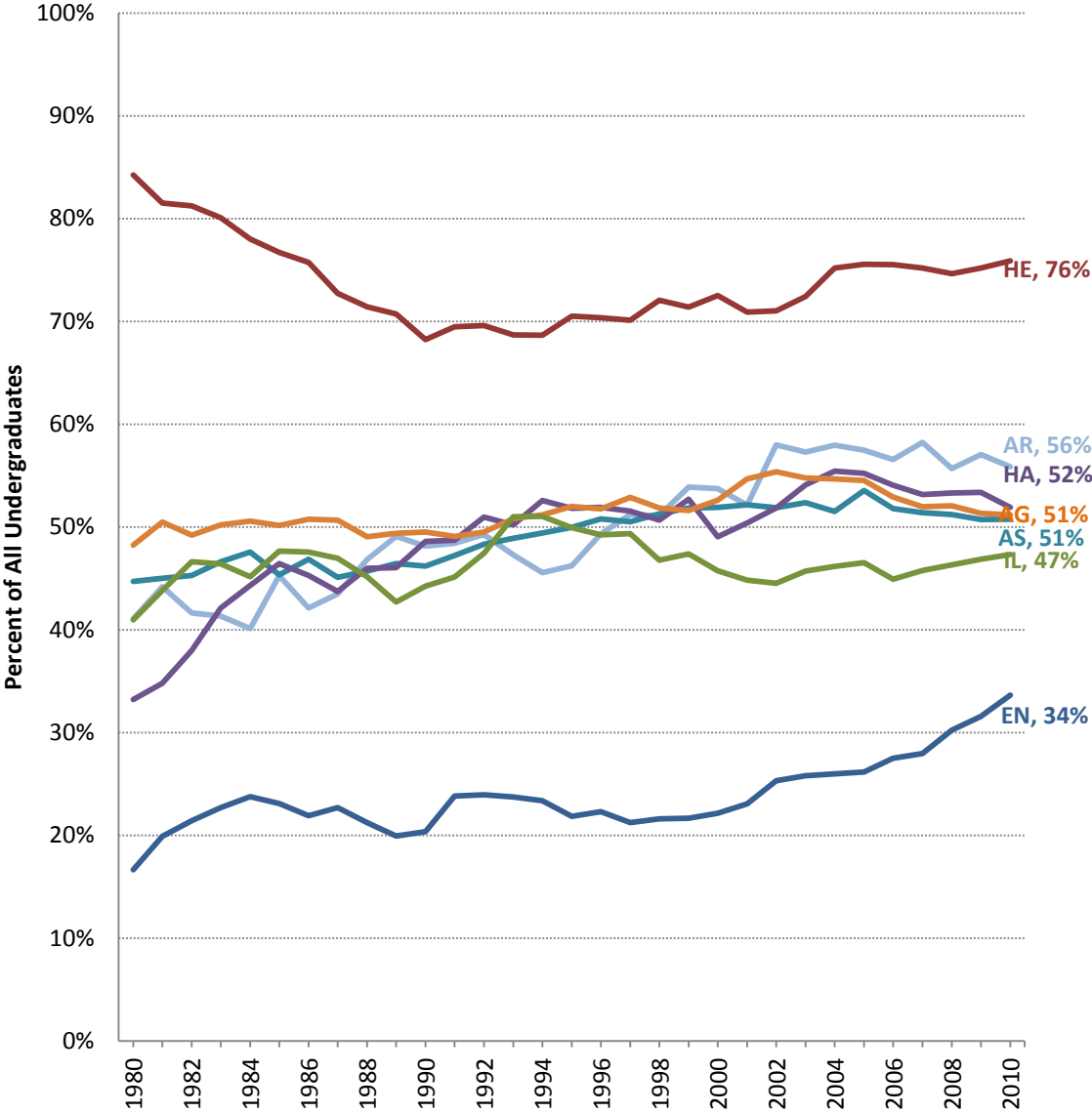
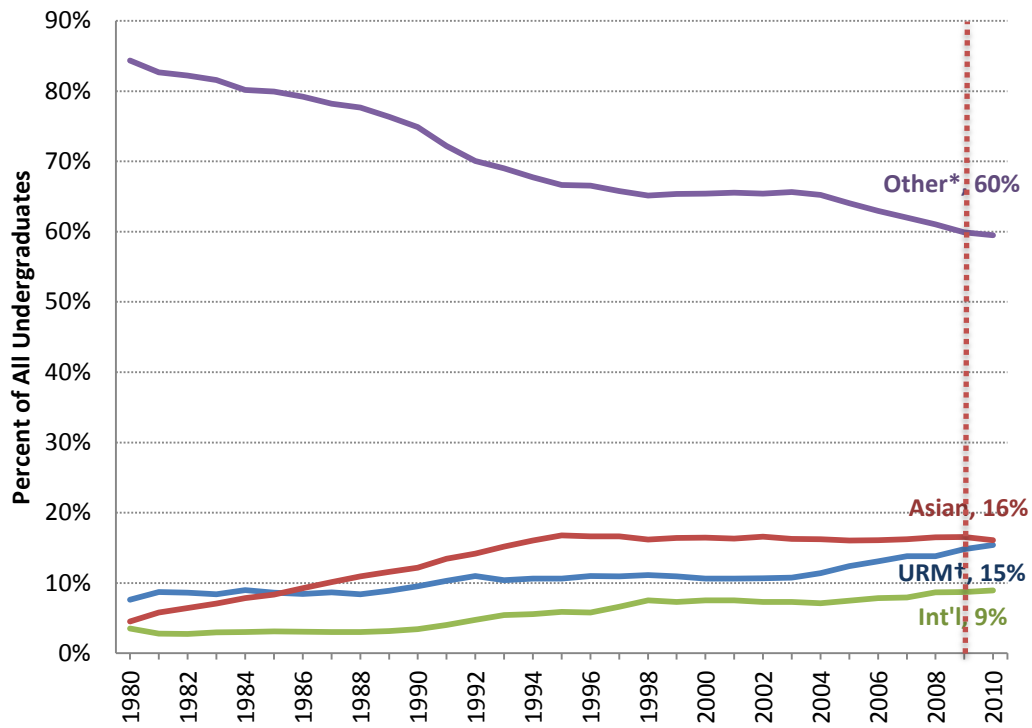
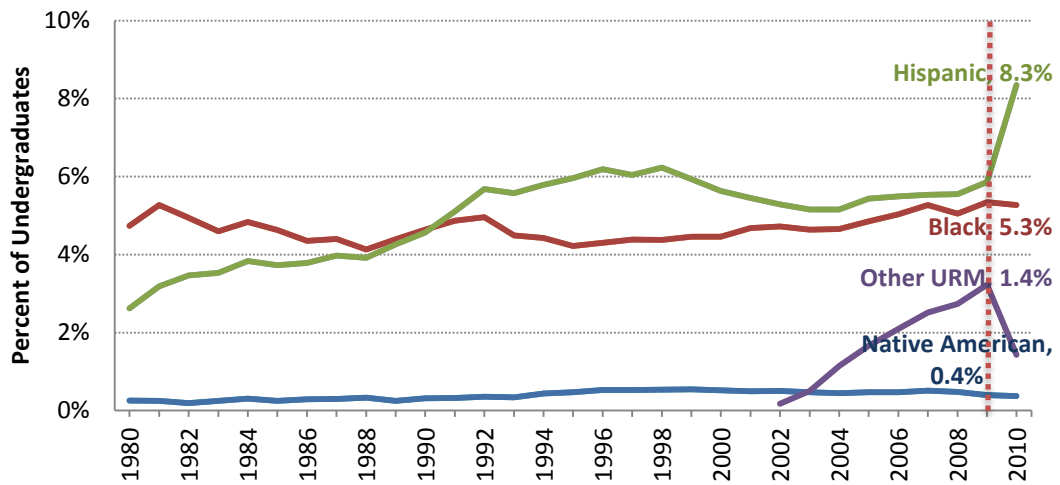


Figure A.3. Percent of Enrolled Undergraduates by Citizenship/Ethnicity/Race, Fall 1980–Fall 2010



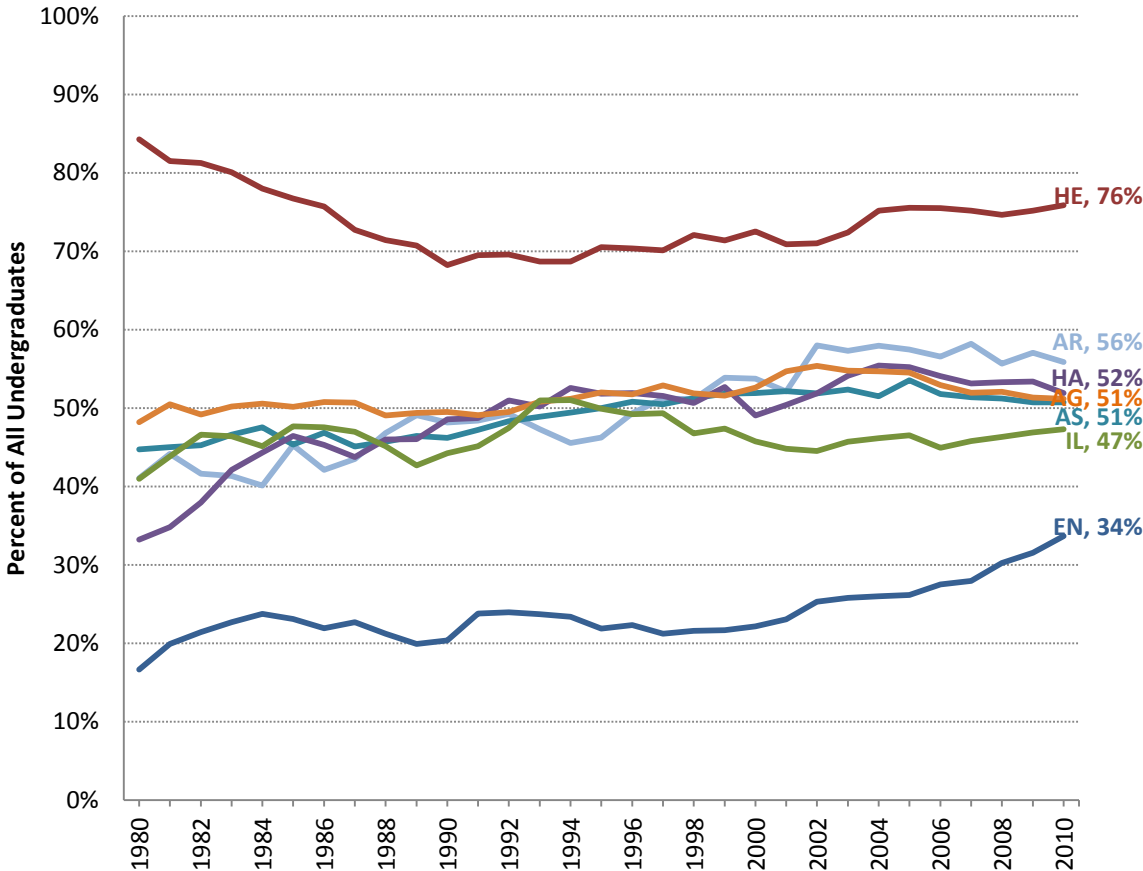
\* Other category includes White, mixed race non-URM, and unknown race [all non-Hispanic].  
 † URM category includes Black, Hispanic, Native American, mixed URM race identities, and, starting 2010, Hawaiian/Pacific Islander.

Figure A.4. Percent of Enrolled Undergraduates that are Hispanic, Black, Native American, or Other URM, Fall 1980–Fall 2010



\* Other URM includes two or more to include Black, Hawaiian/Pacific Islander, and/or Native American. Starting in Fall 2010, all mixed ethnic/race indicating Hispanic are included within the Hispanic ethnicity.

Figure A.5. Percent of Enrolled Undergraduates that are Women, Fall 1980–Fall 2010, by College



## B. First-Time, Full-Time First Year Undergraduates

### Observations

- Enrollment Targets
  - Strategic First-Year Freshman Enrollment Plan of 2001
    - Sought to increase discipline over enrollment management, especially in light of the North Campus Residential Initiative.
    - Established enrollment target of 3,000 fall first-time freshman.
  - When January admissions were suspended in Fall 2003, target for first-time freshman was revised to 3,050.
  - In Fall 2009, enrollment target increased to 3,150.
  - In 2010, the practice of excluding “alternate college” admits in enrollment targets was abandoned, and enrollment target was restated as 3,182.
- Largest freshman class was fall 1993 with 3,196 first-time freshmen (Figure B.1)
- Agriculture & Life Science freshman enrollment increased 60 students between Fall 2009 and Fall 2010 (see Figure B.2)
- The percentage of new students that are under-represented minorities (URM) decreased from 18.9% in Fall 2009 to 18.3% in Fall 2010 (see Figure B.3)
- New federal ethnicity/race guidelines for U.S. citizens and permanent residents implemented Fall 2010 show all students declaring the ethnicity of Hispanic/Latino defaulting to the Hispanic ethnicity regardless of any other race identified. This new guideline increases the Hispanic ethnicity while decreasing the mixed URM race category (see Figure B.4)
- Black student matriculation decreased from 6.7% in Fall 2009 to 5.3% in Fall 2010 (see Figure B.4).
- The first-year classes of Human Ecology are clearly majority female, 77.7% women in Fall 2010. Engineering’s first year students were 37.3% female, an increase from less than 20.0% female two decades earlier (see Figure B.5).
- At 38.9% in Fall 2006, the percentage of freshmen admitted through Early Decision was a record high (see Figure B.6). The next highest percent was 37.1% in 2009.
- The percent of first-time first year undergraduates receiving financial aid decreased from 51.8% to 51.4% between Fall 2008 and Fall 2010 (see Figure B.7).

Figure B.1. First-Time, Full-Time First Year Undergraduate Enrollment, Fall 1980–Fall 2010

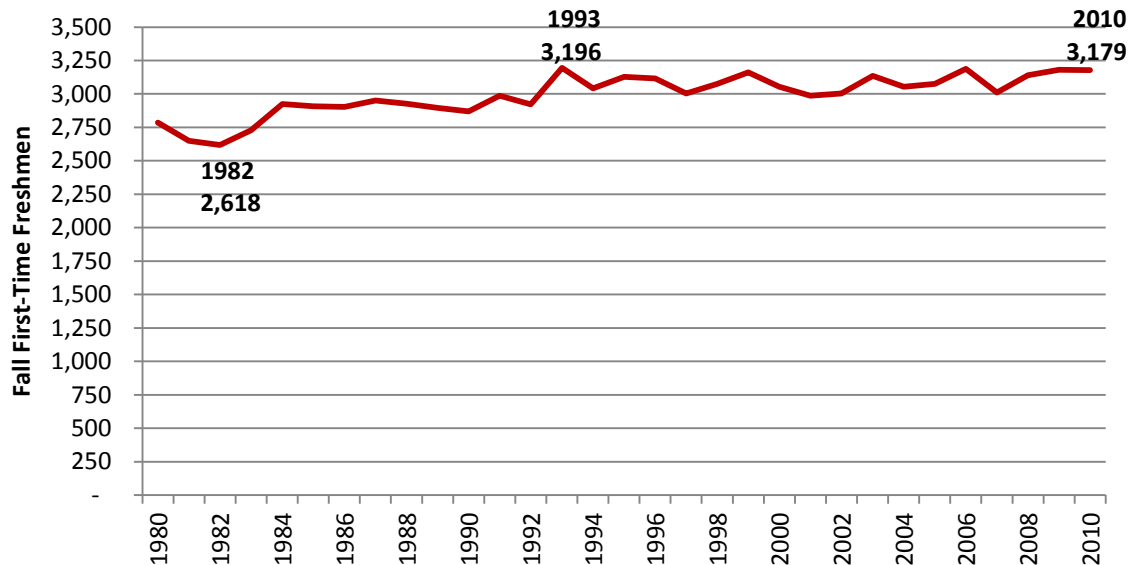
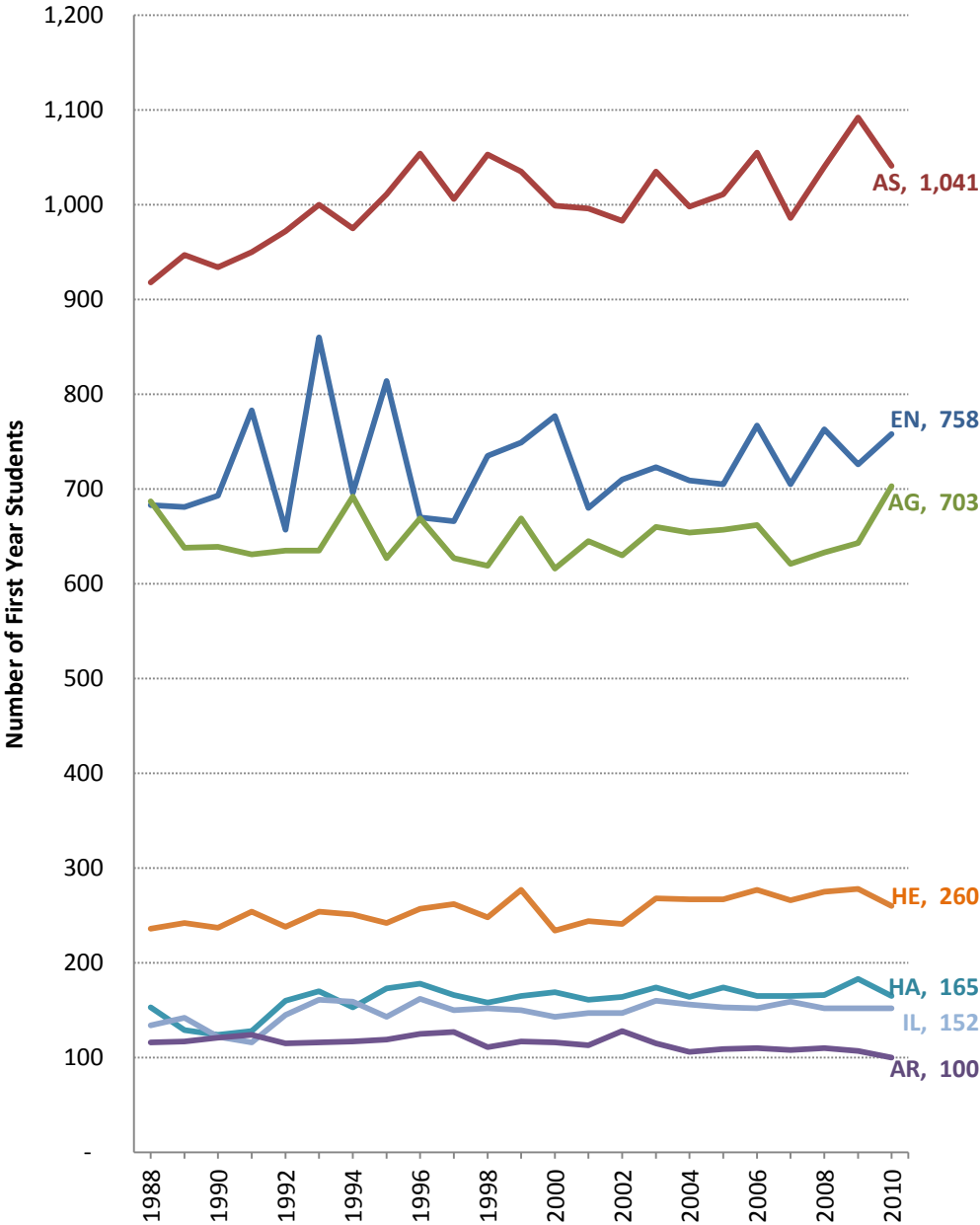
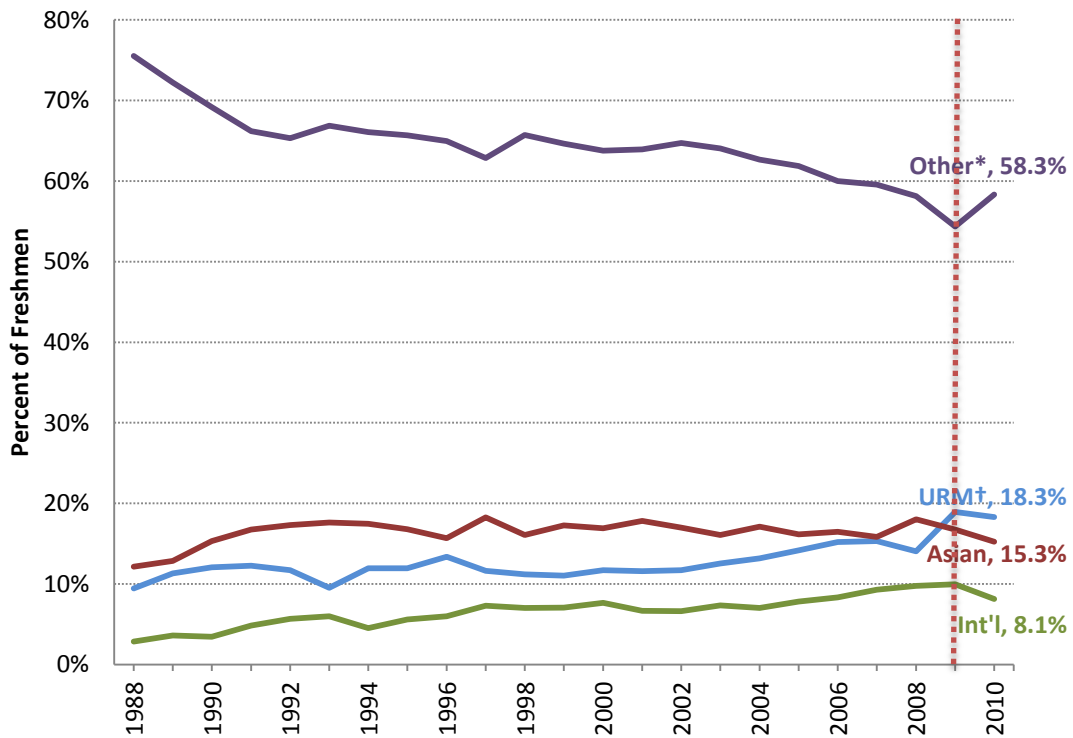


Figure B.2. First-Time, Full-Time First Year Undergraduates, Fall 1988–Fall 2010, By College



**Figure B.3. First-Time, Full-Time First Year Undergraduates by Race/Ethnicity/Citizenship, Fall 1988–Fall 2010**



\* Other category includes White, mixed race non-URM, and unknown race [all non-Hispanic].  
 † URM category includes Black, Hispanic, Native American, mixed URM race identities, and, starting 2010, Hawaiian/Pacific Islander

**Figure B.4. Percent of First-Time, Full-Time First Year Undergraduates that are Hispanic, Black, Native American, or Other URM, Fall 1988–Fall 2010**

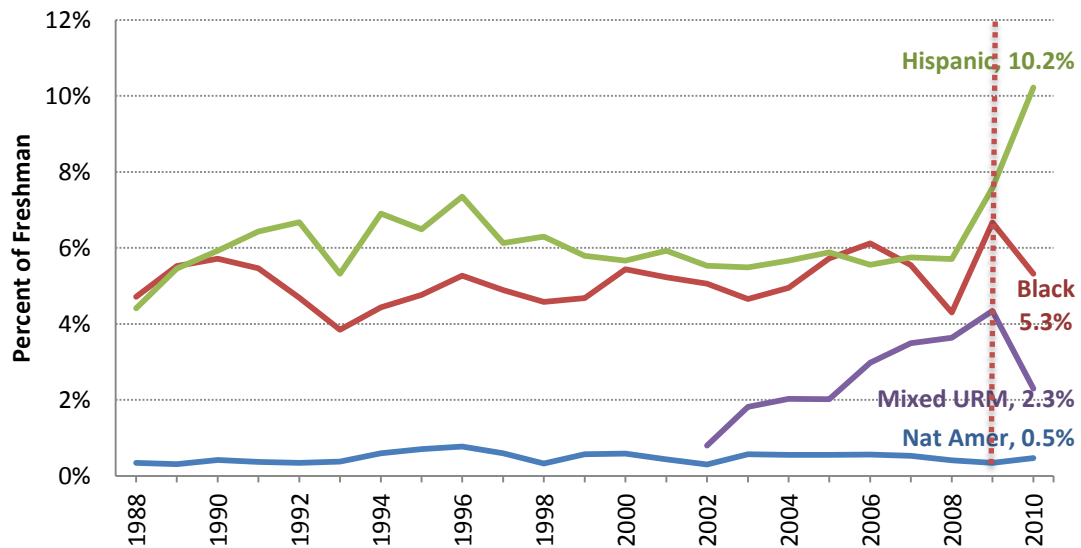




Figure B.5. Percent of First-Time Freshmen that are Women, Fall 1980–Fall 2010

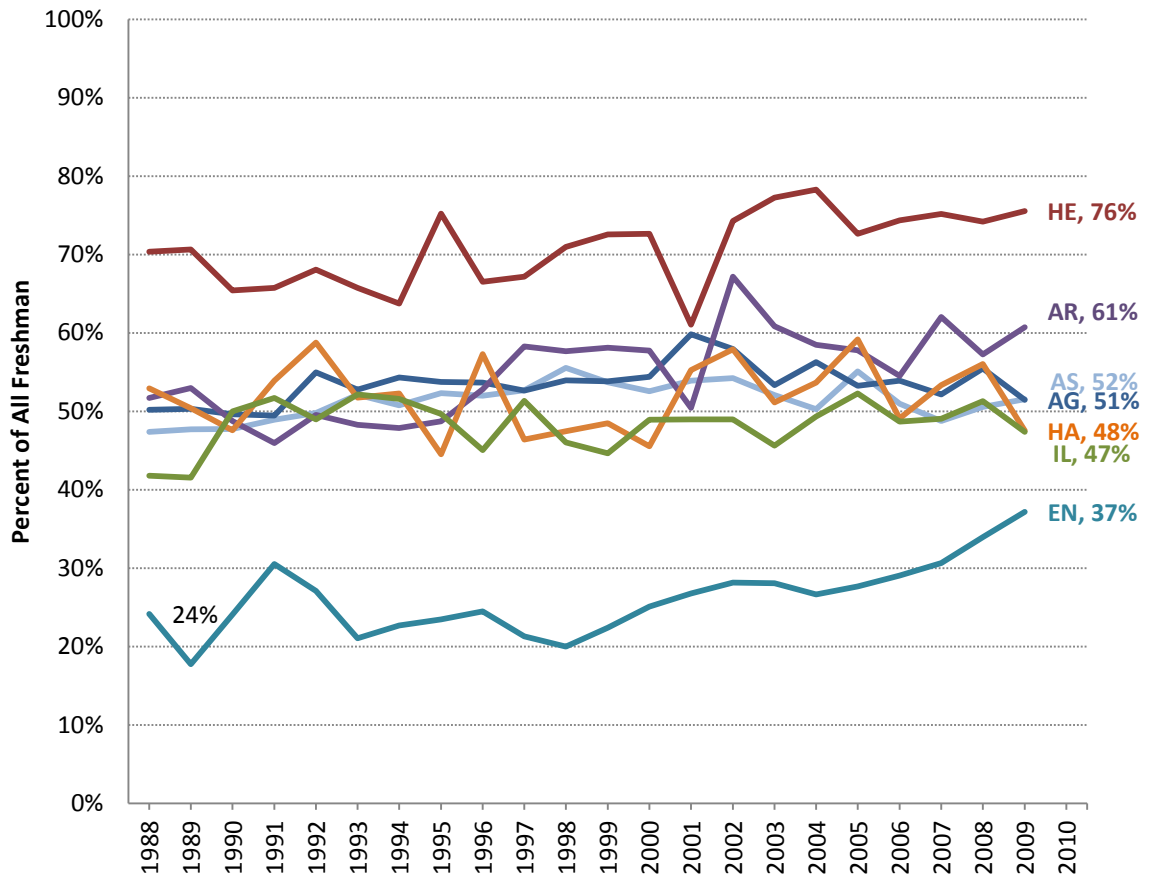
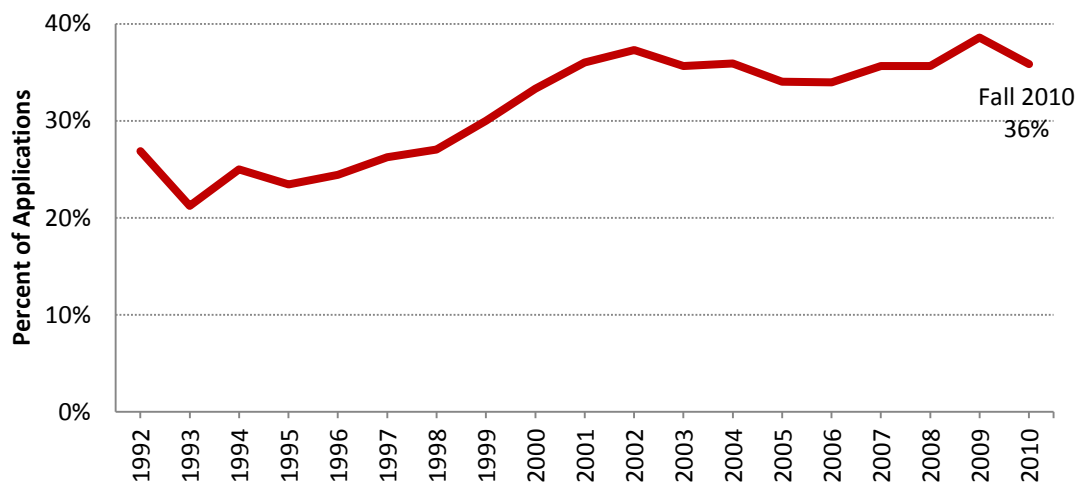
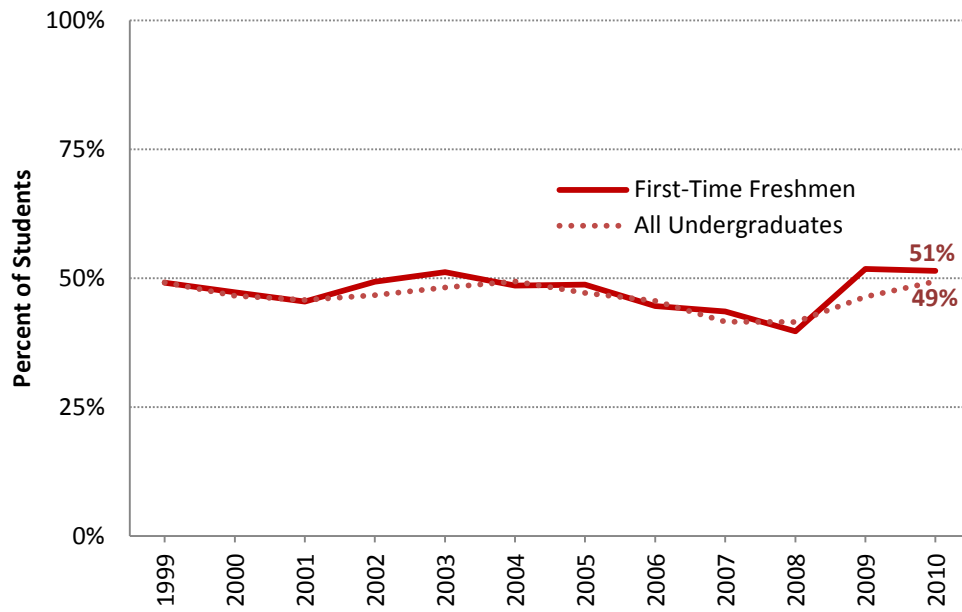


Figure B.6. Percent of First-Time Freshmen Entering in Fall through Early Decision, Fall 1992–Fall 2010



**Figure B.7. Percent of First-Time Freshmen and All Undergraduates Awarded Financial Aid, Fall 1999–Fall 2010**



### C. External Undergraduate Transfers

#### Observations

- The College of Agriculture & Life Sciences admits the largest number of undergraduate transfers (see Figure C.1)
- The number of new external transfers in the College of Agriculture & Life Sciences has decreased from 280 in Fall 2009 to 261 in Fall 2010 (see Figure C.1)
- Since 1999, the School of Industrial & Labor Relations admits the highest percentage of transfers among the college’s new admits (see Figure C.2)
- The percentage of new students in the School of Industrial & Labor Relations that are transfers increased from a low of 12.9% in Fall 1996 to 41.5% in Fall 2009 (see Figure C.2)

Figure C.1. Number of Fall Undergraduate External Transfers Fall 1998–Fall 2010, by College

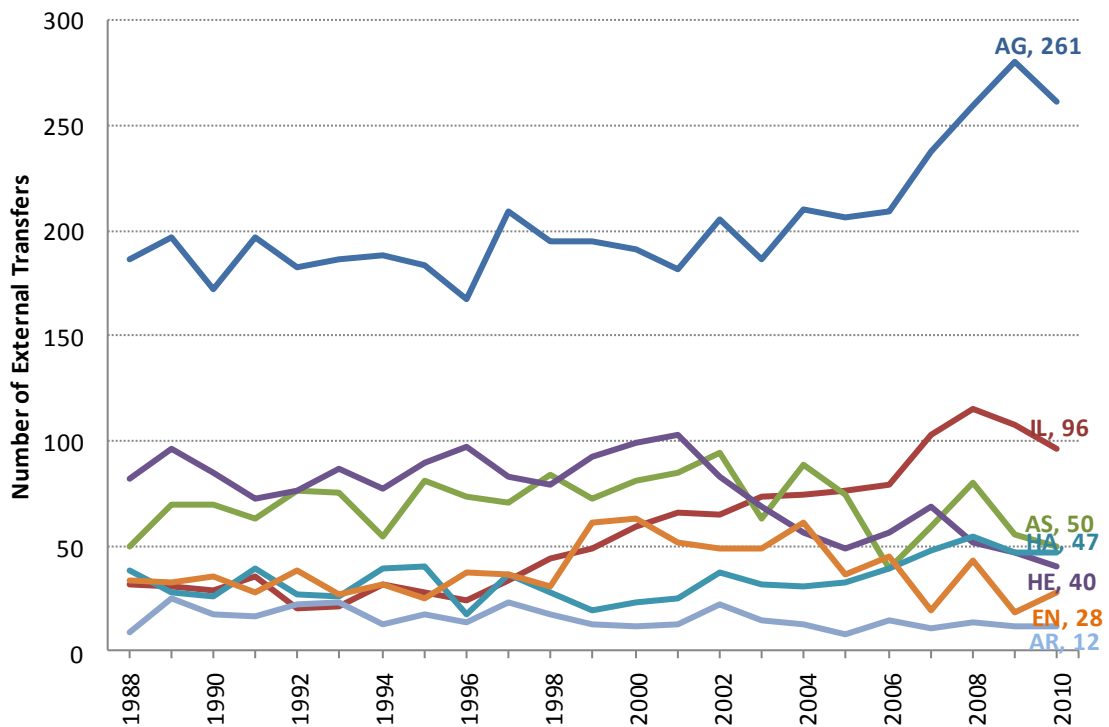
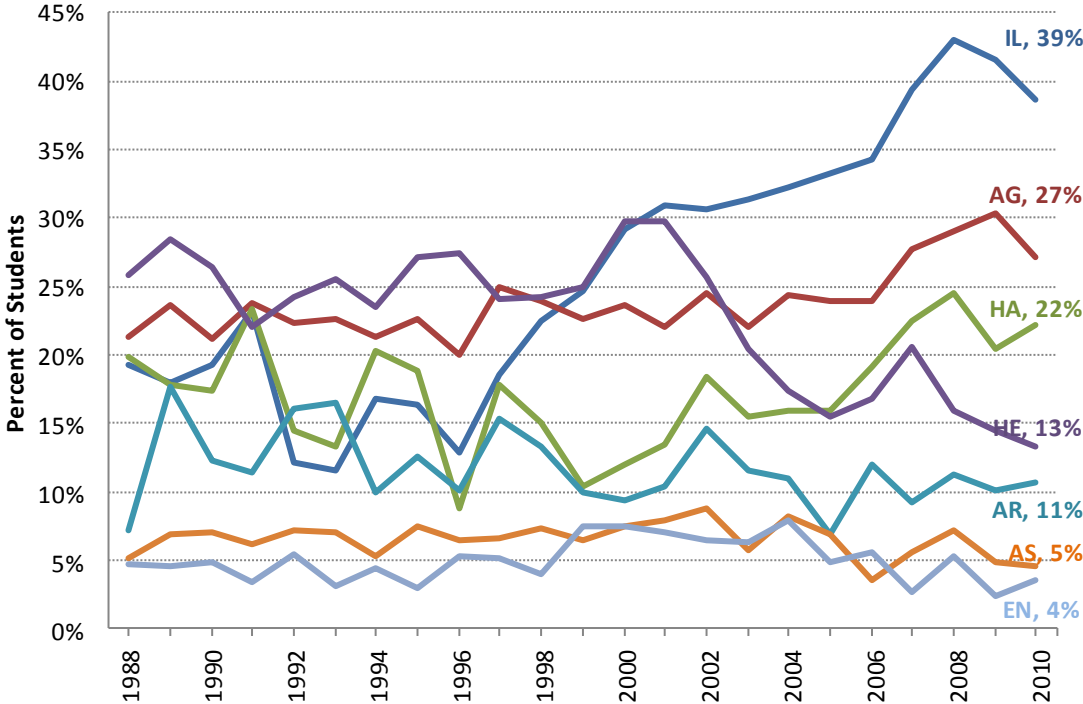


Figure C.2. Percentage of Entering Undergraduates that are External Transfers Fall 1998–Fall 2010, by College



## D. Total Graduate/Professional Enrollment

### Observations

- At 7,004, Fall 2010 Graduate School and the three Professional Schools' enrollment was at an all-time high (see Figure D.1)
- Two schools have reached their highest enrollment in Fall 2010 while the Law School and College of Veterinary Medicine reached their highest enrollment in Fall 2009 (see Figure D.1):
  - Graduate School (increased 282 students since 2009)
  - Johnson Graduate School of Management (increased 32 students since 2009)
- Under-represented minority (in this report, URM's are Black, Hawaiian/Pacific Islander, Hispanic, Native American) enrollment for Fall 2010 is 651, or 9% of total graduate/professional enrollment (see Figure D.3).
- Over the last decade, Hispanic enrollment has increased more rapidly than Black enrollment (see Figure D.4). New federal ethnicity/race guidelines for U.S. citizens and permanent residents implemented Fall 2010 show all students declaring the ethnicity of Hispanic/Latino defaulting to the Hispanic ethnicity regardless of any other race identified. This new guideline increases the Hispanic ethnicity while decreasing the mixed URM race category.
- While total graduate/professional enrollment is 43% female, the percentage of women in the graduate/professional student body varies substantially by school (see Figure D.5)

Figure D.1. Fall Graduate/Professional Schools' Total Enrollment, Fall 1980 – Fall 2010

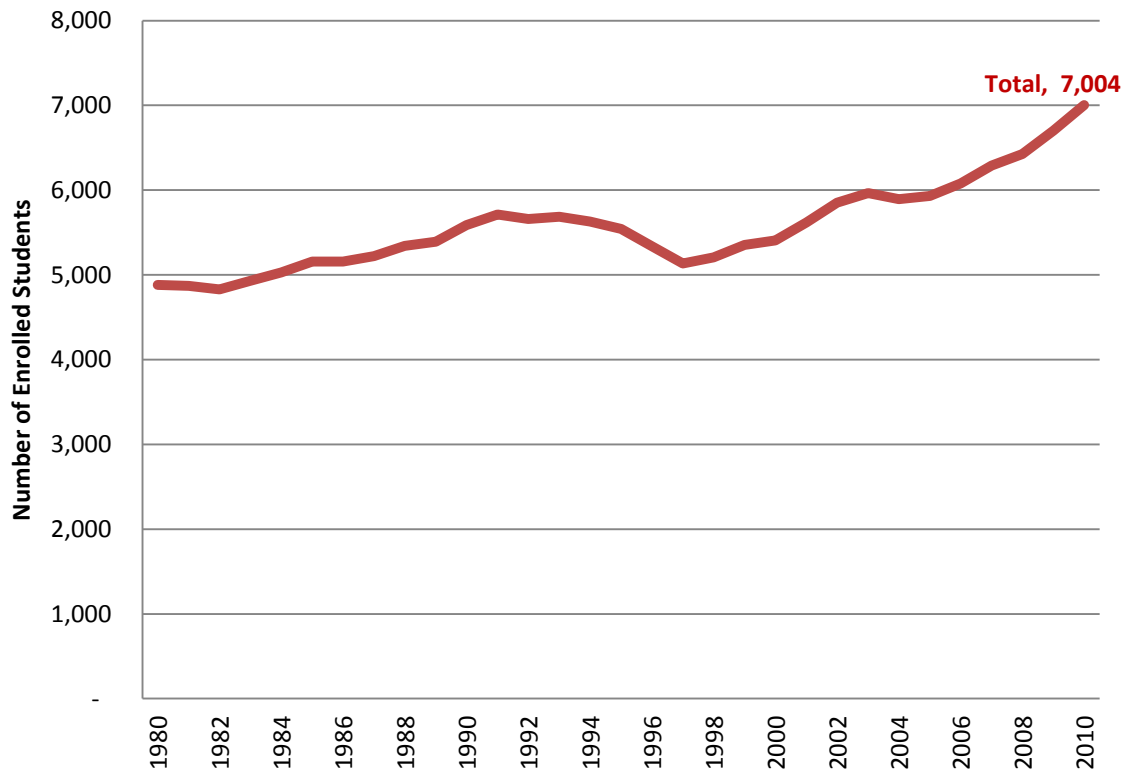
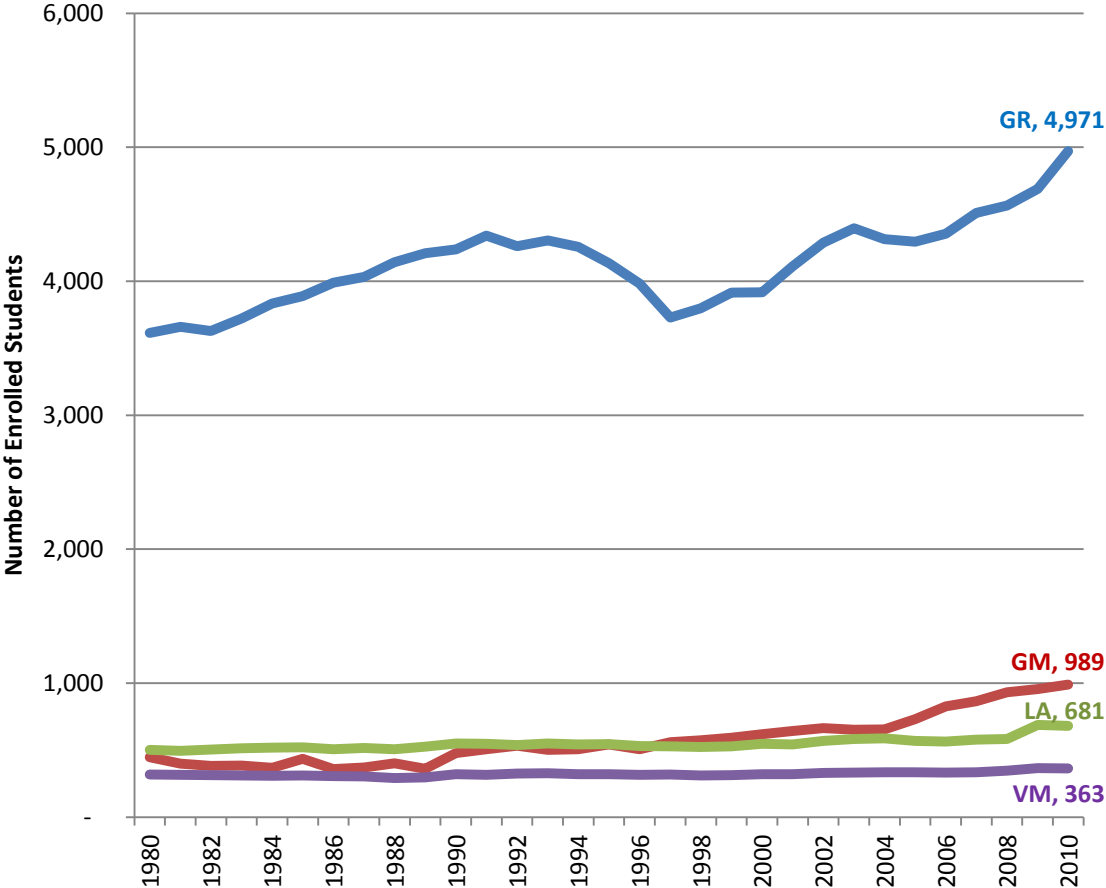
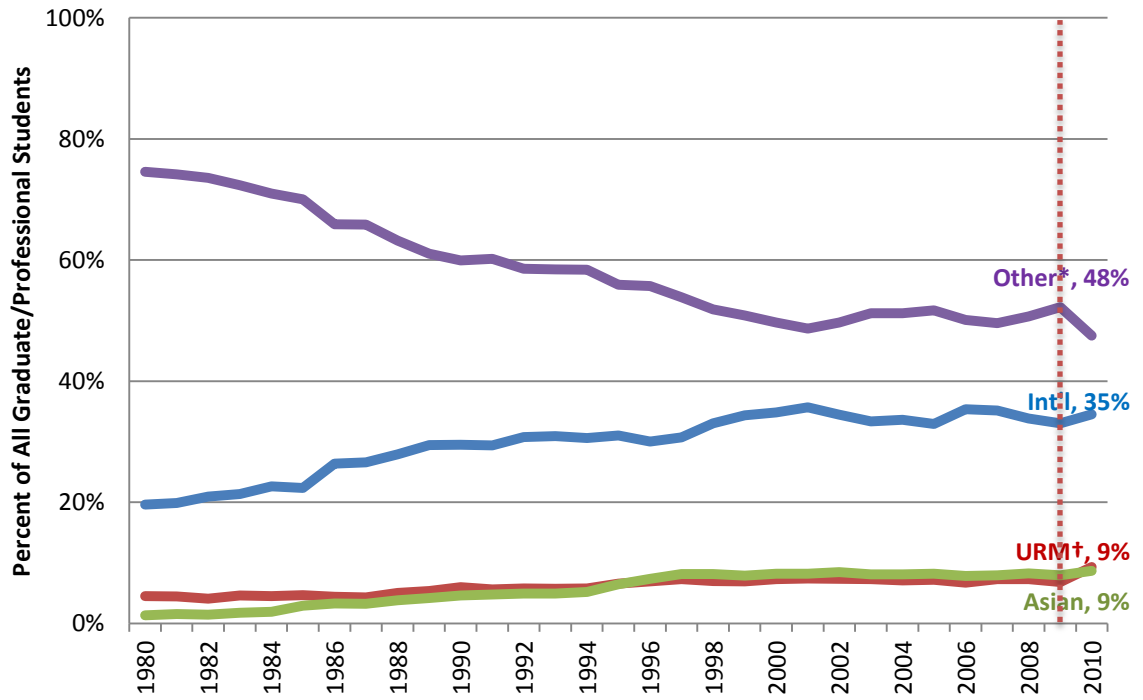


Figure D.2. Graduate/Professional Enrollment, Fall 1980–Fall 2010, by School

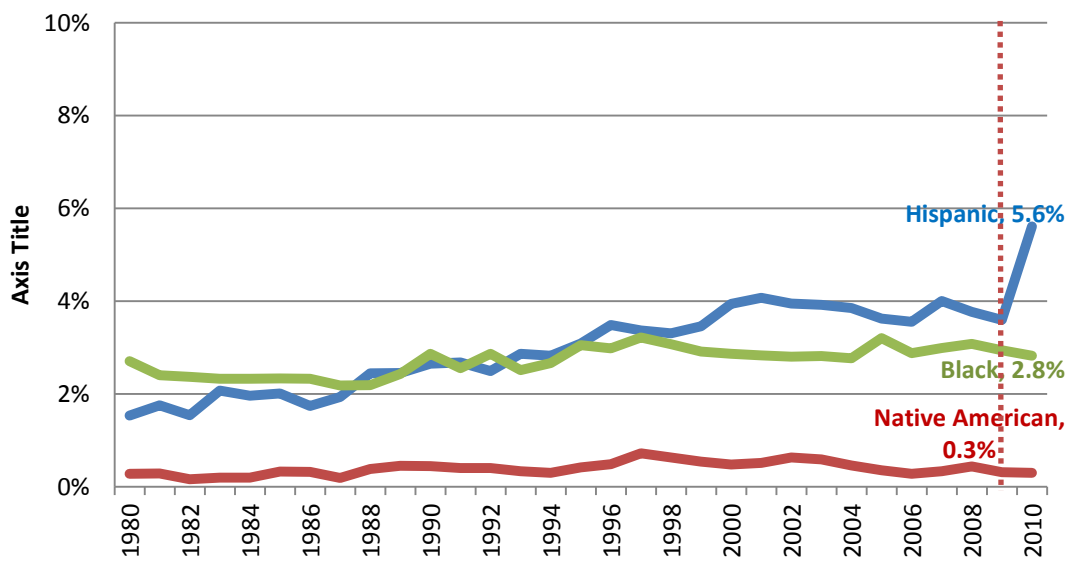


**Figure D.3. Percent of Enrolled Graduate/Professional Students by Citizenship/Ethnicity/Race, Fall 1980–Fall 2010**



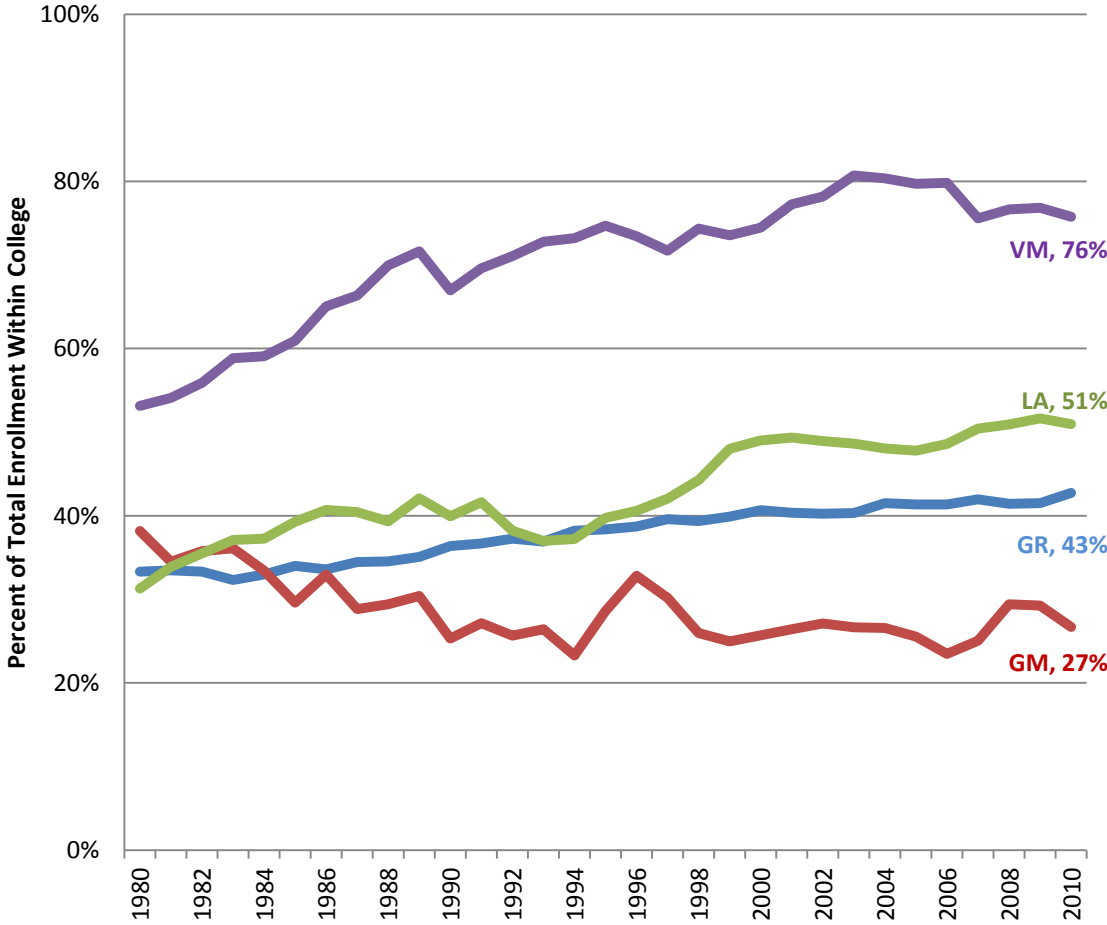
\* Other category includes White, mixed race non-URM, and unknown race [all non-Hispanic].  
 + URM category includes Black, Hispanic, Native American, mixed URM race identities, and, starting in 2010, Hawaiian/Pacific Islander.

**Figure D.4. Percent of Enrolled Graduate/Professional Students that are Hispanic, Black, or Native American, Fall 1980–Fall 2010**



\*Starting in Fall 2010, all mixed ethnic/race indicating Hispanic are included within the Hispanic

Figure D.5. Percent of Enrolled Graduate/Professional Students that are Women, Fall 1980–Fall 2010, by School





### E. First-Time Post-Baccalaureate Enrollment at Cornell

#### Observations

- First-time post-baccalaureate students matriculating at Cornell have increased 469 students in the past five years with the majority of that increase within the Graduate School (Figure E.1).
- The percentage of new post-baccalaureate students that are under-represented minorities (URM) decreased from 10.6% in Fall 2009 to 7.8% in Fall 2010 (see Figure E.2)
- New federal ethnicity/race guidelines for U.S. citizens and permanent residents implemented Fall 2010 show all students declaring the ethnicity of Hispanic/Latino defaulting to the Hispanic ethnicity regardless of any other race identified. This new guideline increases the Hispanic ethnicity while decreasing the mixed URM race category (see Figure E.3).
- Women enrollment in the post-baccalaureate programs remained relatively stable since Fall 2006 (see Figure E.4).

Figure E.1. First-Time Post-Baccalaureate Enrollment, Fall 2006–Fall 2010

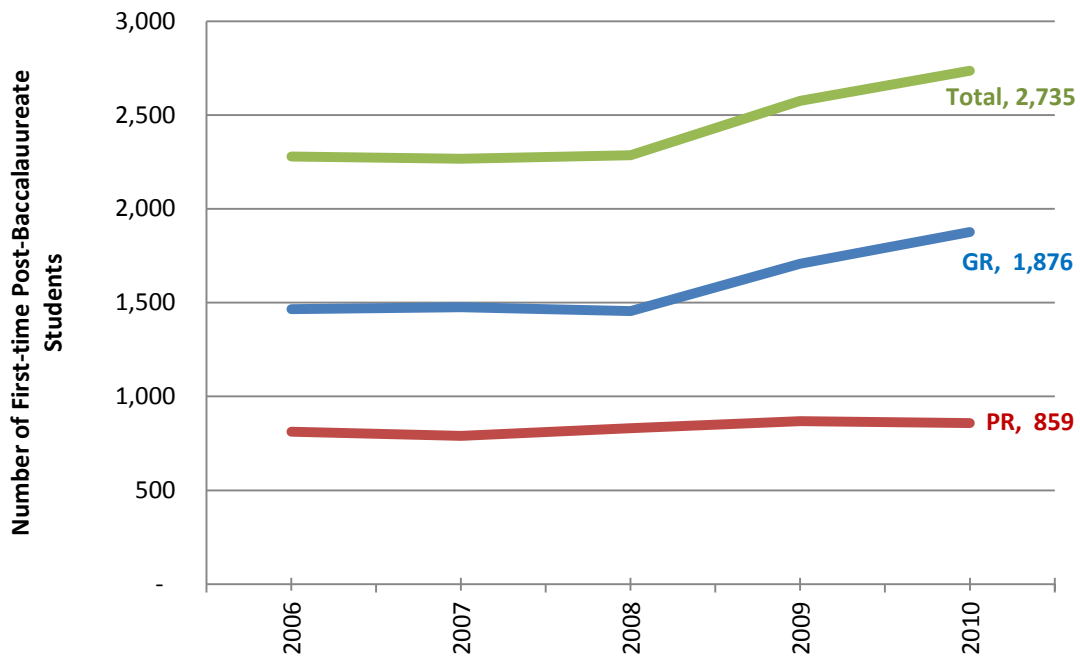
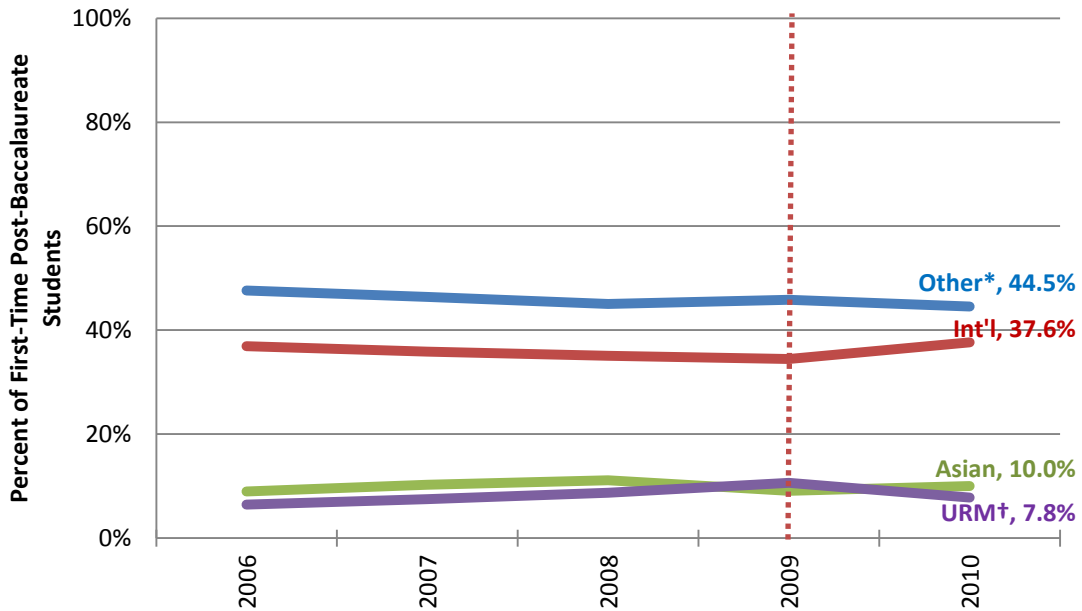


Figure E.2. First-Time Post-Baccalaureate Students by Race/Ethnicity/Citizenship, Fall 2006–Fall 2010



\* Other category includes White, mixed race non-URM, and unknown race [all non-Hispanic].  
 † URM category includes Black, Hispanic, Native American, mixed URM race identities, and starting 2010 Hawaiian/Pacific Islander.

Figure E.3. Percent of First-Time Post-Baccalaureate Students that are Hispanic, Black, Native American, or Other URM, Fall 2006–Fall 2010

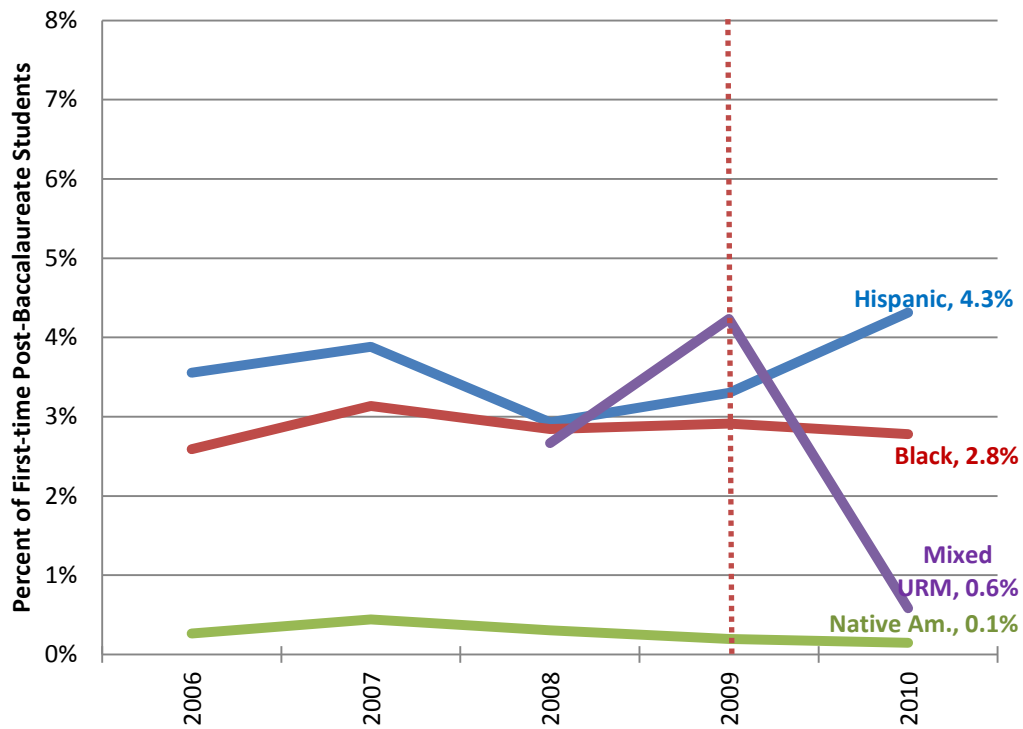


Figure E.4. Percent of First-Time Post-Baccalaureate Students that are Women, Fall 2006–Fall 2010

